



Head2Head
Sensory Theatre

Throughout
April 2021

Can you step up to the challenge, get active and support Head2Head Sensory Theatre?

Take part in a timed or step challenge throughout the month of April 2021 and help children and young people, with a wide range of learning difficulties and disabilities, enjoy interactive, theatre experiences.

Suggested Fundraising targets →

£50

Could fund much needed
equipment for
our sensory tent



£100

Could provide **work
experience**
for a young person
with special needs



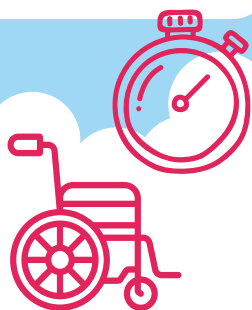
£200

Could help promote our new,
**interactive
and sensory
film, 'Pinocchio'**



Timed challenge

- Walk, push, run or cycle
- Choose how long for – any amount of time is a fantastic achievement!



or... Step challenge

- Take part in 5,000 or 10,000 steps a day.
- You can easily monitor your steps with an app or smart watch



COVID-19: Outdoor activities are a safe way to exercise in the current climate. Always check government guidelines <https://www.gov.uk/coronavirus> before you head out.

How to take part in four easy steps...

1 Let us know that you want to take part

Contact fundraiser-events@h2hsensorytheatre.com or by phone **01372 278021**

2 Start fundraising

Set up your JustGiving page and don't forget to share it with your friends and family

<https://www.justgiving.com/head2headtheatre>

3 Create a social media buzz around your fundraising efforts

It will help drive traffic to your donations page. Take photos and if you use social media, use hashtag:

#StepUp4H2H

4 And most of all, have fun and enjoy being active for Head2Head Sensory Theatre!